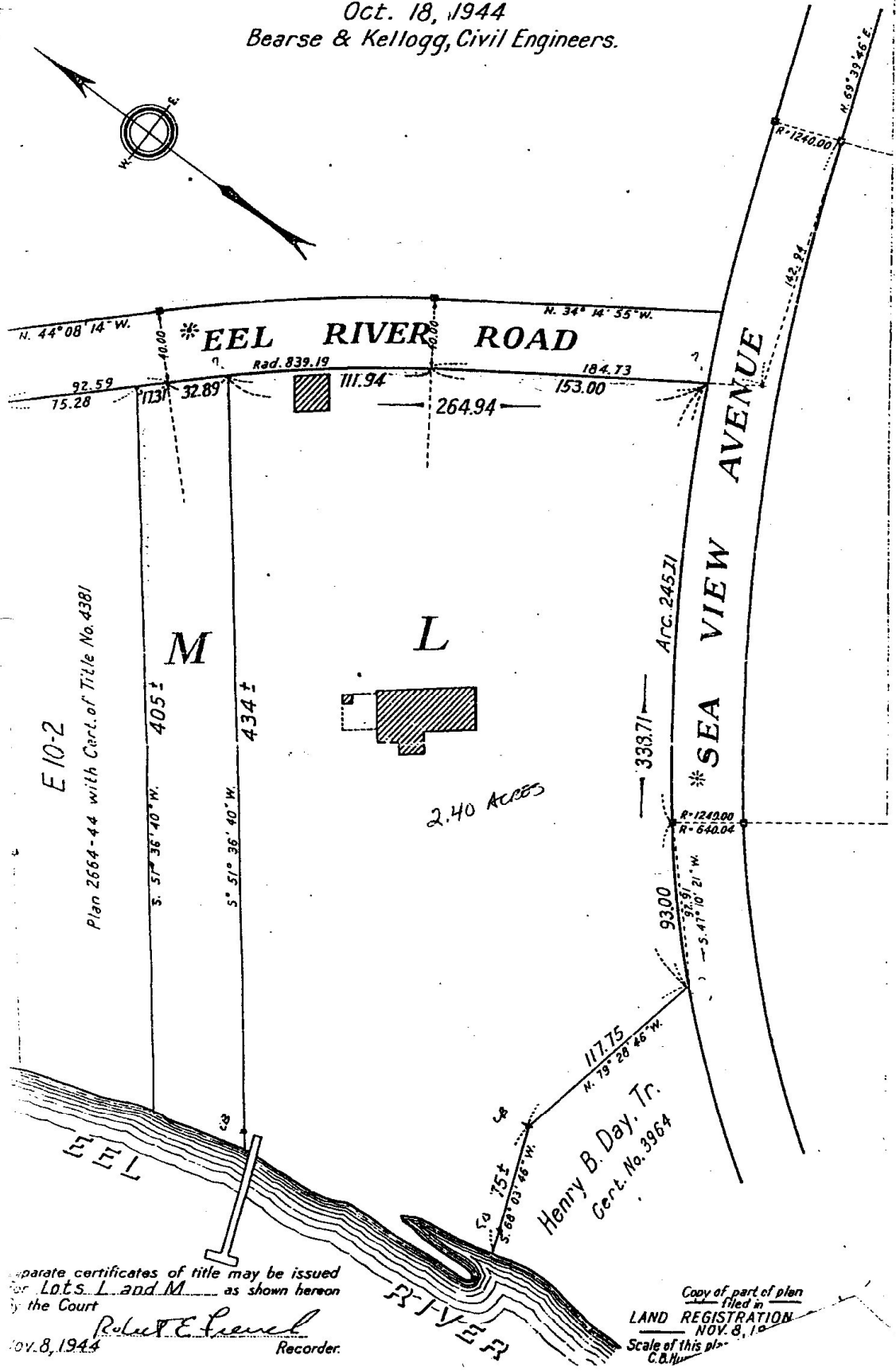


Subdivision of Lots E9-E8 & C' shown on plan 2664-44, 2664-45, 14248^D
 Filed with Cert. of Title No. ³⁶⁷⁻³⁸⁸ 4578 Registry District of Barnstable County 2664-53

2A

LAND IN BARNSTABLE
 Scale 40 feet to an inch

Oct. 18, 1944
 Bearse & Kellogg, Civil Engineers.



Separate certificates of title may be issued
 for Lots L and M as shown hereon
 by the Court
 Robert E. French
 Nov. 8, 1944 Recorder.

Copy of part of plan
 filed in
 LAND REGISTRATION
 NOV. 8, 1944
 Scale of this plan
 C.B.H.